



**Welcome back from the half term break and to our latest newsletter.**

### **Change to Menu**

Due to emergency building work in the kitchen area there might be some amendments to the menu this week.

As it is Shrove Tuesday on 5<sup>th</sup> March, we will be having pancakes for pudding on this day.

For World book day on Thursday 7<sup>th</sup> March there will be a themed lunch – please return the slip being sent home today by Friday so orders can be made.

### **“Tune into Recycling”**

The next collection of batteries will be taking place during this half term. Please send in any used batteries to be sent for recycling. There is a collection box in the school reception. Lancashire County Council provide prizes for the schools who collect the most batteries per pupil.

### **Sports Clubs**

Sports Clubs after school started yesterday for this half term. Please note there will be no sports clubs on Tuesday 5<sup>th</sup> March, Monday 25<sup>th</sup> March to Wednesday 27<sup>th</sup> March as Mr Stephens is accompanying Wyre Class on their educational visit to Liverpool and the residential trip to Robinwood.



### **Parking on Pope Croft Car Park**

It has today come to our attention that Ribble Valley Borough Council **will not permit free parking on Pope Croft Car park** for parents bringing or collecting children from school. We are disappointed to hear this.

Please can we ask parents to continue to park safely around school. We will continue to raise this matter with the council, if there is any change we will let you know. The council have advised us that if you use the car park at other times, it is perhaps worth having a parking permit for the car park, annual cost of £69.00

### **Outstanding payments**

Many thanks for the payments that have been made so far for school lunches. The amount outstanding for school lunches has reduced to £627.95. Thank you for your co-operation in paying promptly for lunches and Before and After School club. As stated before we are now going into the final month of the financial year, and appreciate all payments being brought up to date as soon as possible.

**Lunch money for this half term is £66.70 (£57.50 for children attending the residential trip to Robinwood and Liverpool trip).**

### **Trips**

Wyre class will be visiting the Liverpool World Museum and Philharmonic on Tuesday 5<sup>th</sup> March. Please arrive at school on time for a prompt departure. Children will be dropped off at the rec at approximately 4.15pm.

Calder and Hodder class will be going to Myerscough farm on Monday 11<sup>th</sup> March.

Please can any outstanding reply slips and payments be made this week. The children will need a backpack / rucksack to carry their packed lunch and any appropriate clothing - dependent upon the weather!!



We will be having a non-uniform day on Friday 15<sup>th</sup> March to raise money for Red Nose Day. If your child would like to come in please bring in a donation to the charity of £1.00. Watch this space for details of the theme for the day.

### Parents Evening

Our next parents evening will be held on Wednesday 6<sup>th</sup> March. Letters will be issued today for parents to make an appointment to see their child(ren)'s Class Teacher(s). Please return by Friday.

### Headteacher Awards



#### **Week ending 8 February 2019**

Calder Class: Joshua Flitcroft  
Hodder Class: Harry Moretta  
Ribble Class: Zac Borrott  
Wyre Class: Ellie Martin

#### **Week ending 15 February 2019**

Calder Class: Whole Class  
Hodder Class: Harry Cronshaw  
Ribble Class: Sophie Holgate  
Wyre Class: Scarlett Bateson

### Online Safety

Following on from overhearing several children discussing 'MOMO' the children in Key Stage 2 have today been spoken to about staying safe online. You may have seen various reports in the media of these online 'challenges' which can appear as seeming innocent videos and 'up next' videos on apps such as YouTube, YourTube Kids, Facebook and WhatsApp. On the final page of this newsletter is a guide for parents, which has also been shared to our Facebook page.

## **easyfundraising** .org.uk

Thank you to our supporters (25 in total) who've raised £21.18 of free donations in the last 30 days.

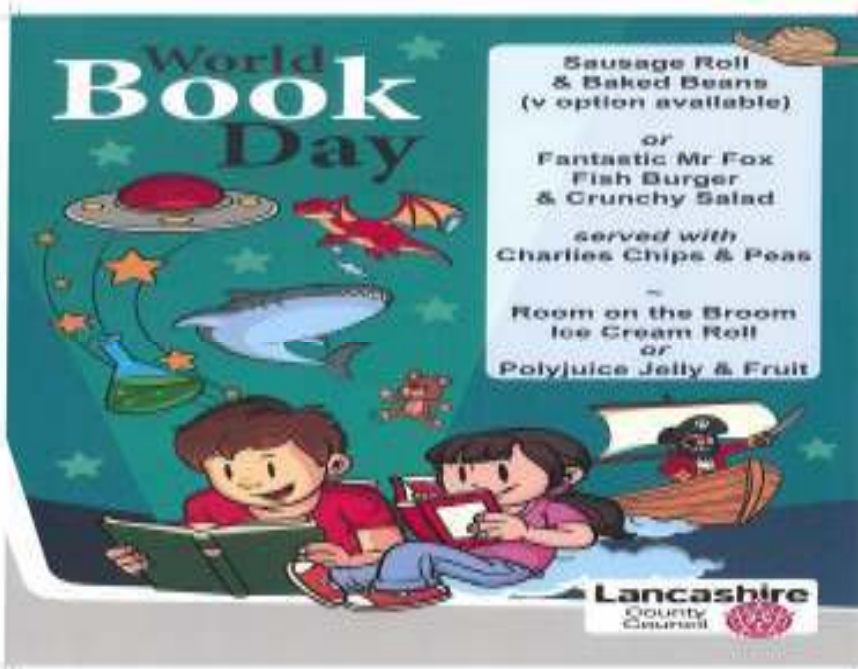
**£813.18 IN TOTAL**

If you're not already set up as a supporter it's easy to do, just visit

<https://www.easyfundraising.org.uk/causes/ribchesterswcptfa/>

### WORLD BOOK DAY

On Thursday 7 March the children can come to school dressed as their favourite book character along with a copy of their book.



### Fairtrade Friday – Afternoon break

Carton of Juice = 30p Hot Chocolate= 30p Biscuit = 20p

Friday 1 March

Friday 5 April

Friday 3 May

Friday 7 June

Friday 5 July

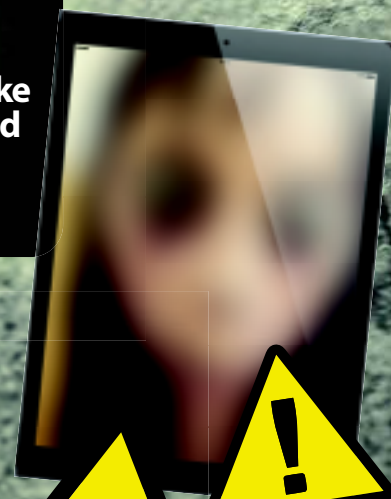
# Diary of Dates:

5 March	Wyre Class trip to Liverpool Philharmonic
6 March	Parents' Evening
7 March	World Book Day
11 March	Calder & Hodder class visit to Myerscough College
13 March	Mass at SS Peter & Pauls for RC Children
15 March	Orienteering Competition (2.15-3.45pm) 6 pupils from Wyre Class
15 March	<b>RED NOSE DAY</b>
18 - 20 March	'Travelling Books' Fair – from 3.30pm each day
21 March	Class photographs (Reception & Year 6)
22 March	Hodder Class Sharing Assembly
25-27 March	Wyre Class Residential Trip
26 March	PTFA Meeting – 8pm at the Black Bull
31 March	Mothering Sunday Service at St Wilfrid's Church
1 April	Year 4 STEM event at Longridge High School (leaving school at 8.40am)
3 April	Tri-Golf tournament (10 pupils from Ribble class)
3 April	PTFA Disco
5 April	Wyre Class Sharing Assembly
<b>5 April</b>	<b><i>School closes for Easter Holidays</i></b>
<b>23 April (Tuesday)</b>	<b><i>School Re-opens</i></b>
17 May	Gardening Day
13-16 May	Year 6 Assessment Week
22 May	New starters (Reception 2019) Parents meeting - 6.30pm
24 May	Bikeability Check (Year 6)
24 May	Wyre Class Sharing Assembly
<b>24 May</b>	<b><i>School closes for Half Term</i></b>
<b>3 June (Monday)</b>	<b><i>School Re-opens</i></b>
6 & 7 June	Bikeability (Year 6)
7 June	Year 5 Taster Day
14 June	Year 1 & 2 Class Sharing Assembly
5 July	Ribble Class Sharing Assembly
12 July	Reception class Sharing Assembly
9 July	KS2 Production Evening Performance
10 July	KS2 Production Evening Performance





Momo is a sinister 'challenge' that has been around for some time. It has recently resurfaced and once again has come to the attention of schools and children across the country. Dubbed the 'suicide killer game', Momo has been heavily linked with apps such as Facebook, WhatsApp, YouTube, and most recently (and most worryingly)... YouTube Kids. The scary doll-like figure reportedly sends graphic violent images, and asks users to partake in dangerous challenges like waking up at random hours and has even been associated with self-harm. It has been reported that the 'Momo' figure was originally created as a sculpture and featured in an art gallery in Tokyo and unrelated to the 'Momo' challenge we are hearing about in the media.



# What parents need to know about **MOMO**



## CHILDREN'S VIDEOS BEING 'HIJACKED'

There have been recent reports that some seemingly innocent videos on YouTube and YouTube Kids (such as 'surprise eggs', unboxing videos and Minecraft videos) have been edited by unknown sources to include violence provoking and/or other inappropriate content. Even though YouTube monitor and remove videos that include inappropriate content, clips can be uploaded and viewed thousands of times before they get reported and removed. As a parent, it's difficult to spot these videos as the harmful content doesn't appear until partway through the video.

## DISTRESSING FOR CHILDREN

Popular YouTubers and other accounts have been uploading reaction videos, showing their experience of the MOMO challenge. Some of the videos include a disclosure message warning that the content may be "inappropriate or offensive to some audiences" and that "viewer discretion is advised" but these videos are still easily accessed by clicking 'I understand and wish to proceed'. The image of the 'Momo' character can be deeply distressing to children and young people and it's important to note that it may slip through parental settings and filters.

## SUGGESTED VIDEOS ON YOUTUBE

Video apps such as YouTube include an 'up next' feature which automatically starts playing another video based on the video just watched. Due to YouTube's algorithm, users are shown 'suggested videos' that they may be interested in. The thumbnails used on suggested videos are purposefully created in a way to encourage viewers to click them. During our research, we found that when watching one Momo related video, we were shown countless other Momo themed videos and other scary content which would be age-inappropriate for children under 18.



**National  
Online  
Safety**

## Top Tips for Parents

### TELL THEM IT'S NOT REAL

Just like any urban legend or horror story, the concept can be quite frightening and distressing for young people. Whilst this may seem obvious, it's important for you to reiterate to your child that Momo is not a real person and cannot directly harm them! Also, tell your child to not go openly searching for this content online as it may only cause more distress.

### BE PRESENT

It's important for you, as a parent or carer, to be present while your children are online. This will give you a greater understanding of what they are doing on their devices, as well as providing you with the opportunity to discuss, support and stop certain activities that your child may be involved in. As the nature of each task become progressively worse it's also important to recognise any changes in your child's behaviour.

### TALK REGULARLY WITH YOUR CHILD

As well as monitoring your child's activity, it's important for you discuss it with them too. Not only will this give you an understanding of their online actions, but those honest and frequent conversations will encourage your child to feel confident to discuss issues and concerns they may have related to the online world.

### DEVICE SETTINGS & PARENTAL CONTROLS

Ensure that you set up parental controls for your devices at home. This will help to restrict the types of content that your child can view, as well as help you to monitor their activity. In addition to this, it's vital that you are aware of your device and account settings to ensure your child's utmost safety. For example, on YouTube you can turn off 'suggested auto-play' on videos to stop your child from viewing content that they have not directly selected.

### PEER PRESSURE

Trends and viral challenges can be tempting for children to take part in; no matter how dangerous or scary they seem. Make sure you talk to your child about how they shouldn't succumb to peer pressure and do anything they are not comfortable with, online or offline. If they are unsure, encourage them to talk to you or another trusted adult.

### REAL OR HOAX?

As a parent it is natural to feel worried about certain things you see online that may be harmful to your child. However, not everything you see online is true. Check the validity of the source and be mindful of what you share as it may only cause more worry.

### REPORT & BLOCK

You can't always rely on parental controls to block distressing or harmful material. People find ways around a platform's algorithm in order to share and promote this type of material. Due to this, we advise that you flag and report any material you deem to be inappropriate or harmful as soon as you come across it. You should also block the account/content to prevent your child from viewing it. Also encourage your child to record/screenshot any content they feel could be malicious to provide evidence in order to escalate the issue to the appropriate channels.

### FURTHER SUPPORT

Speak to the safeguarding lead within your child's school should you have any concerns regarding your child's online activity or malicious content that could affect them.

If your child sees something distressing, it is important that they know where to go to seek help and who their trusted adults are. They could also contact Childline where a trained counsellor will listen to anything that's worrying them.

The Childline phone number is  
0800 1111.

